

THE 26 LETTER DANCE TECHNICAL RIDER - International

THE SHOW

Duration : 60 min.
Choreographer: Hélène Langevin
Agent : Amelie Gauthier +1-514-508-9273 // +1-514-816-3890
amelie@bougedela.org
Technical Director: Martin Lepage +514-808-6607
le.martinlepage@gmail.com

THE TEAM ON TOUR

- 1 Technical Director /light designer / stage hand
- 1 Sound / light / video operator
- 1 Tour Director
- 1 Artistic Director
- 4 Dancers

Theatre rider :

The Presenter agrees to forward, without delay, the venue's most recent technical data sheet to the company's technical director.

Technical schedule :

- Load in of the set, focus, intensity: 6 to 8 hours (after the pre-hang of the adapted light plot, may vary depending on the venue)
- Warm up before performance : 2,5 hours (can be in a dance studio in the building) before the 1st show, 2 hours the next days
- Duration of the Show : 55 minutes
- Strike : 2 hours

TO BE PROVIDED BY THE THEATRE :

CREW NEEDED FOR LOAD IN

- The Company needs 7 in house technicians (1 Technical Director, 2 Light Technician, 1 Sound Engineer, 3 Setup Assistants). It could be less, depending of the venue and the time given for the take in.
- Stage area, loading doors and dressing rooms need to be cleared to allow the COMPANY to setup immediately upon arrival.
- Stage should be swept and mopped, and dressing rooms cleaned before arrival of COMPANY.

CREW REQUESTED FOR THE SHOW

- Technical Director of the venue
- Chief Electrician of the venue
- Sound Engineer of the venue

STAGE

- wooden floor adapted for dance show, (no bumps, or imperfection)
- Depth: minimal : 5,4m // ideal : 8,5m
- Width : minimal : 7,3m // ideal : 9,7m
- Height : minimum clearance of 3,6m // ideal : 6,7m

MASKING

- Italian style masking, 4 set of black legs in velvet
- we need a crossover behind the the stage (please inform the TD if not possible)

COMMUNICATIONS

- 2 clear com stations (1 at the sound booth and 1 back stage center, behind the set)

Company's TD initial _____

Presenter's TD initial _____

BOUGE DE LÀ

DANSE JEUNE PUBLIC

LIGHTING

- 75 traditional lamp maximum, with all needed wiring cable
(the company can adapt the light plot to fit the venue, to be discussed with the TD)
- 48 dimmers min. / 60 dimmers max.
(It's possible to adapt the show to 24 dimmers, but it must be agreed upon by the TD)
- 8 booms of 1,8m minimum (the company can provide two booms)
- Fog machine (MDG Atmosphère type is recommended)
- All DMX wiring (XLR3) and extension cord for the power lines of our LEDs
- The Gelatine if possible, we can provide the missing colours

SOUND

- Sound system that delivers 100db to the sound booth
- 3 way stereo system with subwoofer
- 2 or 4 monitors on stage
- 2 monitors in the audience on stand as a surround sound reference (the company may provide these if needed)
- At the house booth, the sound board and the light board must be side by side (only one technician operates the show)
- We prefer not to mix the show in a closed booth.

DRESSING ROOMS

- 1 or 2 dressing room for 4 dancers (Shower, washbowl, mirrors, functional toilets)
- 7 litre of Bottle water per day (2 shows)
- Ice cube available in case of injury
- Peanuts and fresh fruits (banana, orange, pineapple)
- Laundry service mandatoy after each set of 2 shows
- Electric or steam iron
- The temperature on stage must be 22° Celsius

BOUGE DE LÀ WILL PROVIDE :

SET

- The set is made of a wooden wall, 6,7m in length by 2,4m high and 1,8m deep, mounted on a metal frame. It is self supporting.
(see picture below)
- We provide our own dance floor and the tape to fix it.

SOUND

- We use our own sound console X32
- The show is run on a computer by the sound-light-video technician, and the Technical director is back stage as stagehand

LIGHT

- Light Board, ETC Express 48/96.
- 2 black gun, UV light.
- 11 LED Wall Washer, to be plugged in XLR 3 in our optosplitter stage right, in the universe 2 of the ETC EXPRESS,
- (each LED linked itself with it's own power cord and DMX wire)
- Fog machine
- all transfo 220 volt to 110 volt
- **We have a scene where we use our water base fog machine to create a wall of smoke, it's a fast disapearing smoke. If it's not possible to use smoke in the venue please let the Technical Director know as soon as possible so we can consequently adjust the scene**

VIDEO

- Video projector placed on the floor at the front of the stage
- We have our own video snake that includes all the power ans DMX to power the video and to send DMX to the optosplitter

Company's TD initial _____

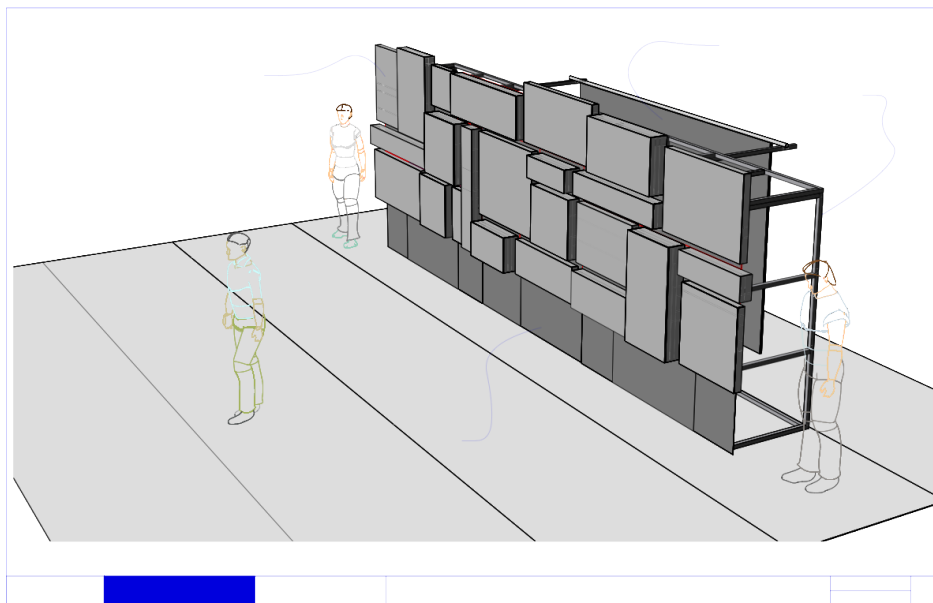
Presenter's TD initial _____

Page 2 of 4

up-date: **Décember 4th, 2018**

BOUGE DE LÀ

DANSE JEUNE PUBLIC



Company's TD initial _____

Presenter's TD initial _____

BOUGE DE LÀ

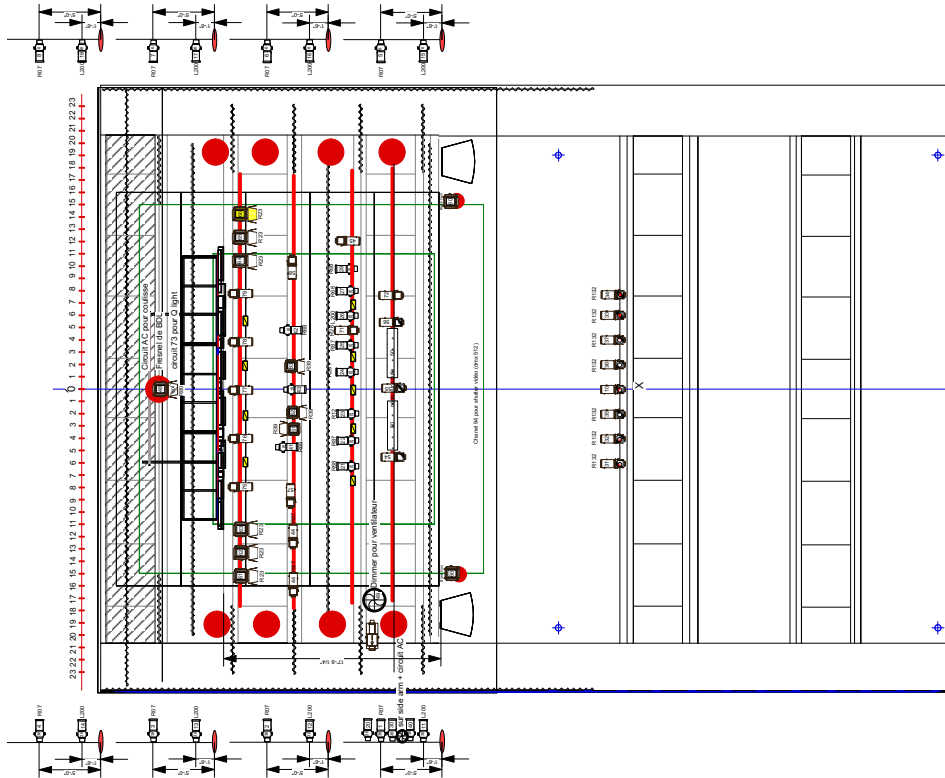
DANSE JEUNE PUBLIC

Bouge de là
ABCEDAIRE
Plan d'éclairage Montreal Nord
Conception lumière: Caroline Ross
Dessiné par : Caroline Ross
Cell: 418-262-3656
rosscaroline@ccapcable.com
Version Tour

Légende:

On view, see on	Symbols	Projecteurs
10		ETC zoom, 15-50, 1 K
13		ETC zoom, 25-50, 1 K
7		Frenels 6" - 2K
3		Frenels 6" - 1K
2		Fluorescents
0		Leko ETC: 19 degrés
12		Leko ETC: 26 degrés
18		Leko ETC: 36 degrés
2		Black gun (voir plan accompagnement)
11		Color Blast (voir plan accompagnement)
1		Machine à fumée (voir plan de site)
1		Projecteur vidéo (voir plan de site)
2		Ventilateurs (voir plan accompagnement)

76 Projecteurs
68 dimmers



Company's TD initial _____
Presenter's TD initial _____