



Technical Rider
Production : Bedtime!

Choreographer: Hélène Langevin

General manager and agent : Ginette Ferland : (514) 523-3994 / netgi@videotron.ca

Technical director: Martin Lepage 1-(514)-808-6607 / le.martinlepage@gmail.com

or : Julie Brosseau Doré (514) 346-7644 / mapetitejulie@gmail.com

Bouge de là staff (8 persons)

1 Choreographer /Tour director
5 Dancers
1 Sound technician
1 Light Director/ Technical Director

Stage needed

Resilient floor

Dimension required

stage width 30'
height 16' (it can be done with 13' but not recommended)
depth from point zero to back curtain 26' (if lower it need to be approved)

Stage curtain

If available we need a house curtain
4 sets of black legs
The distance and height of the masking will be set on site

Sound and light booth in the public if possible

Light requirement

Equipment needed from the venue

60 dimer 2.4KW
Protocole DMX 512
Haze Machine, like the MDG Atmosphere

Repartition of the dimer

24 circuits on floor
7 circuits at FOH
28 circuits on the stage pipe or grid

Light instruments

65 lamps
see light plot joined to this file (it's the basic LX plot)

Accessories

8 booms with base 5'
6 floor plate
5 Gobos holder, 6 Drop iris for leko
All cable to wired everything

Equipment supplied by Bouge de là

Light board ETC Express 48/96
2 chinese shadow's lamps
10 LED wall washer lamps

Take in schedule

We need a pre-hang of the light plot
Time to set up the set, hang our decor, install the dance marley 1 to 2 hours
Focus and intensity (sound and light) 2 hours
Show call is 2 hours before the show
The show last 55 min
Take out 1h30

Staff needed

1 Technical director
4 technicians (1 sound, 2 LX, 1 carpenter) more if needed in the venue

Staff needed during the show

1 stage hand to open the curtain and drop a microphone at the beginning
It could be the T.D.

Set

Our dance Marley (32'L x 26'D)
Suspended lycra screen 26' x 3'6"
Bed on wheel 9' x 5'
Props for the bed and on stage
Suspended mobile

Dressing room

2 dressing rooms needed, toilets, shower, lavatory
1 production office if possible with WIFI
Washing and dryng machine

Sound System

Needed from the venue

Power needed at the sound booth 100db
3 way speakers with sub woofer
on the wing of stage
4 monitors on each corner of the stage (2 mix)
2 surround sound speakers in the back of the house (we can provide these)

Equipment supplied by Bouge de là

Sound board 32 input Behringer X32
Wireless microphone
Everything comes from a laptop with Q-LAB

Communication

2 clear com, (stage and light booth)

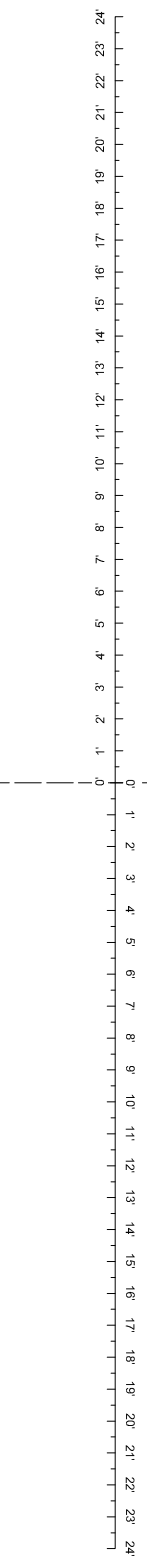
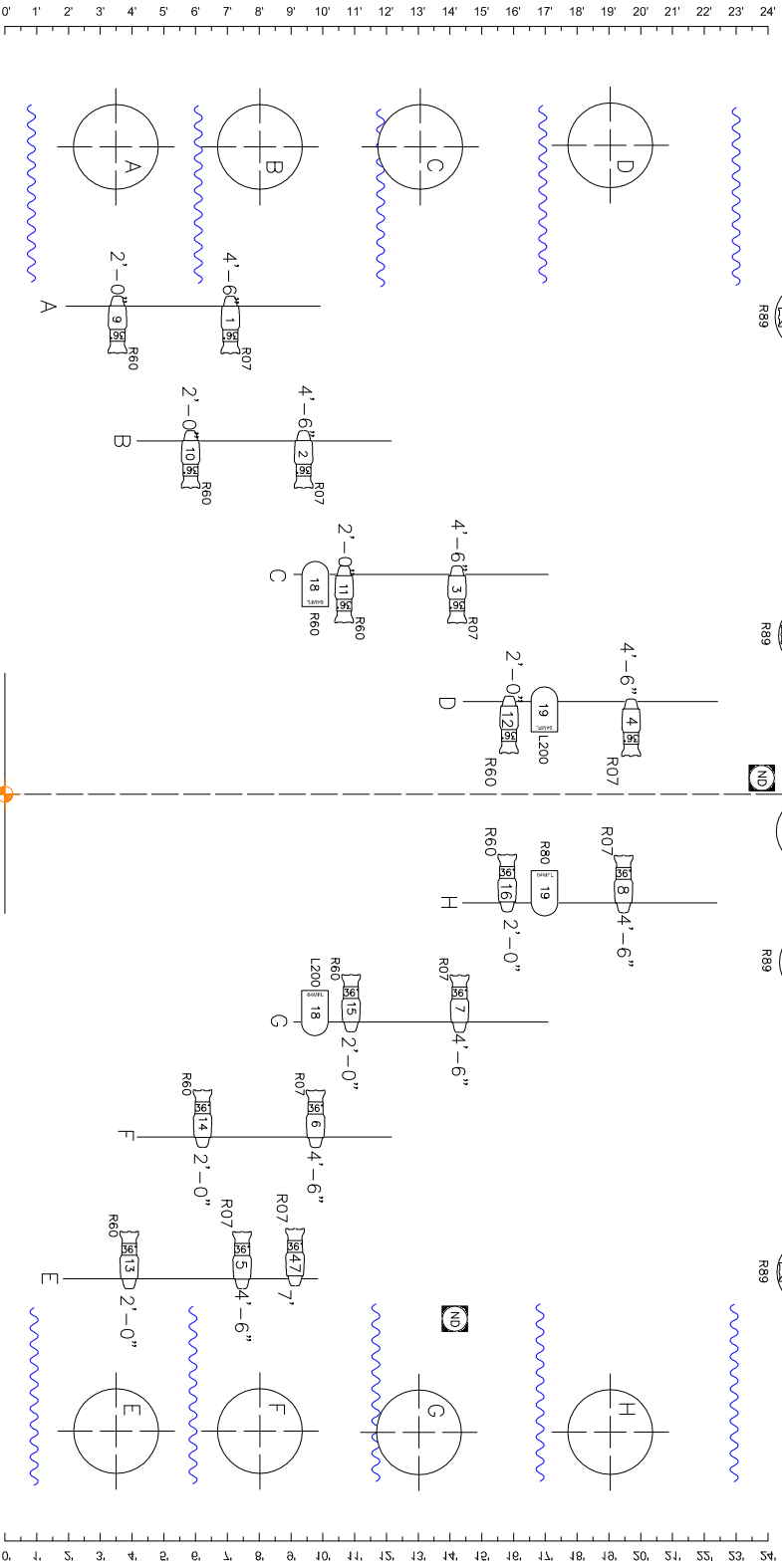
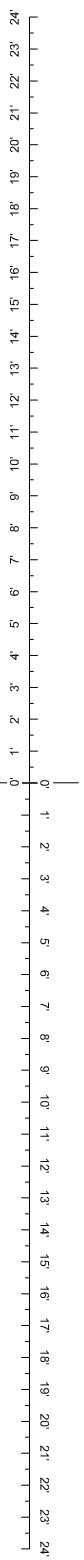
Extra

On the day of the show we ask that the stage temperature be maintained
to 22 degree Celcius
Provide 1,5 liter of water to the staff (8 total)

Thank you for sending our Technical director all the information on your venue (Technical rider, Line set, PDF drawing, Vector Works 2008, CAD 2005)
Martin Lepage (514) 808-6607 / le.martinlepage@gmail.com OR Julie Brosseau Doré (514) 346-7644, mapetitejulie@gmail.com

000000

Mise à jour : 29 septembre 2013

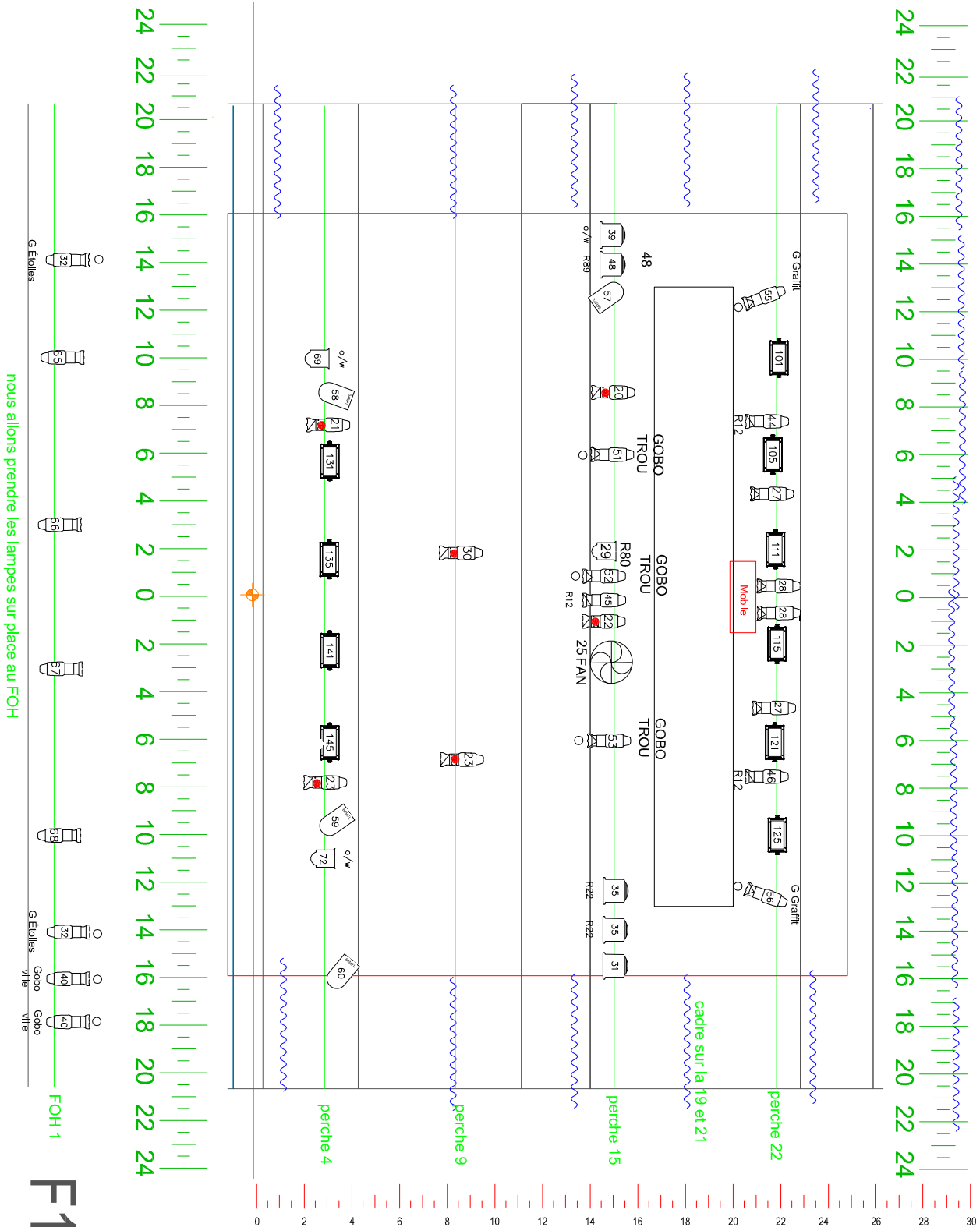


Instruments	Num In	
	Inventory	Used
PAR 64 MFL	0	4
Fresnel 1000W avec volet	0	0
Strand SL 23/50	0	0
Etc 19 deg	0	0
SL 26deg	0	4
SL 36deg	0	17
Fresnel 2000W avec volet	0	0

Accessories	Num In	
	Inventory	Used

Legend	
drop iris	Color
Porte gobo	Color
Champel	Color

<p>NOTE</p> <p>Éclairagiste de tournée</p> <p>Martin Lepage</p> <p>514-808-6607</p>	
<p>Caroline ROSS 11 mars 1014</p>	
<p>Plantation au Sol</p>	
<p>St Hyacinthe</p>	
<p>Compagnie Bouge de l'â</p>	
<p>Ô Lit !</p>	



nous allons prendre les lampes sur place au FOH

FOH 1

F1

Instrument	Num In Inventory	Used	Remaining
PAR 64 MFL	0	10	56
Fresnel 1000W avec volet	0	3	0
Strand SL 23/50	0	9	0
Etc 19 deg	0	0	0
Etc 26deg	0	13	0
etc 36deg	0	17	0
Fresnel 2000W avec volet	0	5	1

Accessories

Accessories	Num In Inventory	Used	Remaining
Led Wall Washer			

Legend

- drop iris
- Porte gobo



Compagnie Bouge de là
St Hyacinthe

plafond
Caroline Ross

NOTE
Eclairagiste de tournée:
Martin Lepège
514-808-6607

Echelle: 1/4"=1'
11 mars